

IMPORTANT SAFETY INSTRUCTIONS

When using electrical appliances, especially when children are present, basic safety precautions should always be followed, including the following:

READ ALL INSTRUCTIONS BEFORE USING.

KEEP AWAY FROM WATER

DANGER - Any appliance is electrically live even when the switch is off. To reduce the risk of death by electric shock:

1. **Always unplug appliance immediately after using.**
2. Do not use while bathing or in the shower.
3. Do not place or store appliance where it can fall or be pulled into a tub or sink.
4. Do not place in, or drop into, water or other liquids.
5. If an appliance falls into water, unplug it immediately. **Do not reach into the water.**

WARNING - To reduce the risk of burns, electrocution, fire, or injury to persons:

1. **This appliance should never be left unattended when plugged in.**
2. Close supervision is necessary when this appliance is used by, on or near children or individuals with certain disabilities.
3. Use this appliance only for its intended use, as described in this manual. Do not use attachments not recommended by the manufacturer.

4. **Never operate this appliance if it has a damaged cord or plug, if it is not working properly or if it has been dropped or damaged, or dropped into water. Return the appliance to an authorized service center for examination and repair.**
5. **Keep the cord away from heated surfaces. Do not pull, twist, or wrap line cord around appliance.**
6. Never use while sleeping.
7. Never drop or insert any object into any opening or hose.
8. Do not use outdoors or operate where aerosol (spray) products are being used or where oxygen is being administered.
9. Unit is hot when in use. Do not let heated surfaces touch eyes or skin.
10. **Do not place the heated unit directly on any surface while it is hot or plugged in.**
11. Never block the air openings of the appliance or place on a soft surface such as a bed or couch, where the air openings may be blocked. Keep the air openings free of lint, hair and other debris.
12. Do not use an extension cord with this appliance.
13. Do not touch hot surfaces of the appliance. Use handles or knobs.
14. Do not attempt to touch the housing of your appliance near the barrel, as it is hot when in use.
15. Do not use with a voltage converter.
16. This appliance is not a toy. Keep away from children.
17. Burn hazard. Keep appliance out of reach from young children, particularly during use and cool down.

18. Always place the appliance on a heat-resistant, stable flat surface.

SAVE THESE INSTRUCTIONS OPERATING INSTRUCTIONS

Use on Alternating Current (60 hertz) only. This unit is designed to be operated at 125V AC.

This appliance has a polarized plug (one blade is wider than the other). As a safety feature, this plug will fit in a polarized outlet only one way. If the plug does not fit fully in the outlet, reverse the plug. If it still does not fit, contact a qualified electrician. Do not attempt to defeat this safety feature.

When putting on the table, the unit should be in correct position. The two barrels should be facing upward.

NOTE: Do not use this styling appliance on hair extensions.

GETTING STARTED

Hair should be clean and completely dried before using the styler. Plug the iron into an electrical outlet. Turn on unit. Allow unit to heat up for 30 seconds.

WARNING: The styling iron's barrels will get very hot within a few seconds and should not be placed in contact with the skin after the styling iron has been turned on.

When the High setting is chosen, the curling wand will have an extremely hot barrel. Always do a test curl before using the curling wand to ensure the proper setting for your hair type.

The styler's 3 unique ultra-high heat temperature settings and Instant Heat technology provide styling versatility for all hair types. If you have fine hair, a low temperature will provide the best results. If you have thick, wavy or hard-to-curl hair, keep the heat setting on high. You can vary the iron's temperature according to your particular need!

TEMPERATURE SETTING GUIDE

TEMP. CONTROL	HAIR TYPE
I (Low)	Delicate, thin, easy-to-style hair
II (Medium)	Average-to-thick or treated hair
III (High/Max)	Hard-to-style hair

TO CREATE BEACHY WAVES

Separate your hair into three parts: an upper, middle and a lower segment. Clip the upper two sections of hair out of the way. Spray the bottom half of hair with styling product if desired.

1. Begin with lower segment of hair. Place sections of hair between the wave plate and barrel; press and hold for 5–10 seconds.
2. Repeat styling process moving down, so waves are continuous.
3. Release middle sections of hair and repeat.
4. Release upper section of hair, starting two inches from roots and repeat.
5. Let hair cool and break up waves with your fingers to create a softer look.
6. Tease roots with a comb for added volume.



HELPFUL HINTS

Once all the hair has been styled, take random sections from the top layer and position the styler slightly higher up from the first wave created, this will create a natural looking style.

- For a voluminous look, clamp the hair between the barrels close to the root on the bottom sections only. As you move to the top section, position the styler mid-way down the hair section.
- After styling, break up the waves with your fingers and add serum to the hair. Never use a brush as this will add static to the hair, causing the hair to become frizzy.



USING INSTANT HEAT, THE 3 ULTRA-HIGH HEAT TEMPERATURE SETTINGS

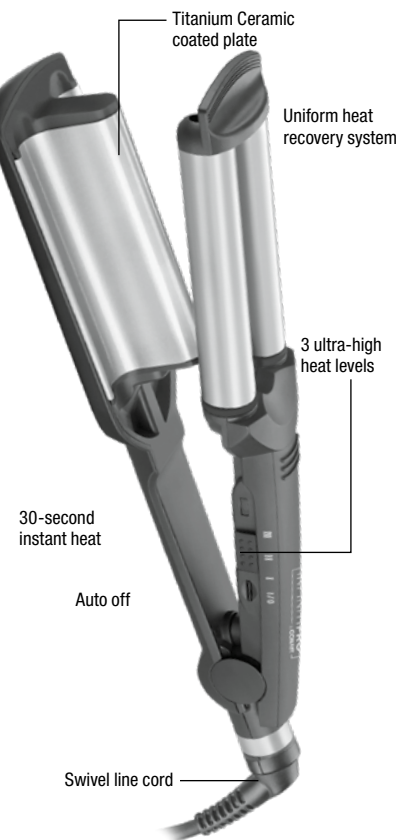
This Instant Heat styler has 3 ultra-high heat temperature settings. There is a temperature range that's gentle and safe for every type of hair, from the finest to the most resistant, and helps you create the look you want.

UNIFORM HEAT RECOVERY SYSTEM

Conair's professional salon standards of engineering provide you with a uniform and improved heat recovery system that maintains the iron at constant temperatures. There is a constant surge of power to ensure that heat is continuously and quickly delivered for optimal styling results, unlike other units, which lose heat during use. This provides consistent styling power so that every strand of your hair is set with the same level of heat and comes out the same way for a perfect finish.

Never leave your styling iron on and unattended. However, should you fail to turn the iron off, it will shut itself off automatically within 60 minutes.

GETTING TO KNOW YOUR STYLING IRON



USER MAINTENANCE

Your styling iron is virtually maintenance free. No lubrication is needed. Keep all vents and openings clear of dirt and dust. If cleaning becomes necessary, disconnect the unit from the power source, allow to cool and wipe exterior with a cloth. If any abnormal condition occurs, unplug the unit, allow it to cool, and return it for repair to an authorized service representative only. No repairs should be attempted by the consumer.

CAUTION

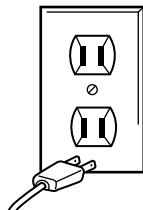
NEVER allow the power supply cord to be pulled, twisted, or severely bent. Never wrap the cord tightly around the appliance. Damage will occur at the high flex point of entry into the appliance, causing it to rupture and short circuit. Inspect the cord frequently for damage. Stop use immediately if damage is visible or if unit stops or operates intermittently.

STORAGE

When not in use, your appliance is easy to store. Allow appliance to cool, then simply store out of reach of children in a safe, dry location. Do not jerk or strain cord at plug connections. Do not wrap the line cord around the appliance. Allow the cord to hang or lie loose and straight at the point of entry into the appliance.

**WARNING:
IF YOU THINK
THE POWER IS OFF
WHEN THE SWITCH
IS OFF,
YOU'RE WRONG.**

KEEP AWAY FROM WATER



Everyone knows that electricity and water are a dangerous combination. But did you know that an electric appliance is still electrically live even if the switch is off? If the plug is in, the power is on. So when you are not using your appliances, keep them unplugged.

**ALWAYS UNPLUG
SMALL APPLIANCES**

LIMITED TWO YEAR WARRANTY (U.S. AND CANADA ONLY)

Conair will repair or replace (at our option) your unit free of charge for 24 months from the date of purchase if the appliance is defective in workmanship or materials.

To obtain service under this warranty, return the defective product to the service centre listed below, together with your purchase receipt and \$5.50 for postage and handling. In the absence of a purchase receipt, the warranty period shall be 24 months from the date of manufacture.

ANY IMPLIED WARRANTIES, OBLIGATIONS, OR LIABILITIES, INCLUDING BUT NOT LIMITED TO THE IMPLIED WARRANTY OF MERCHANTABILITY AND FITNESS FOR A PARTICULAR PURPOSE, SHALL BE LIMITED IN DURATION TO THE 24 MONTH DURATION OF THIS WRITTEN, LIMITED WARRANTY. IN NO EVENT SHALL CONAIR BE LIABLE FOR ANY SPECIAL, INCIDENTAL, OR CONSEQUENTIAL DAMAGES FOR BREACH OF THIS OR ANY OTHER WARRANTY, EXPRESS OR IMPLIED, WHATSOEVER.

This warranty gives you specific legal rights, and you may also have other rights, which vary from province to province.

SERVICE CENTRE

CONAIR CONSUMER PRODUCTS ULC
100 Conair Parkway,
Woodbridge, Ont. L4H 0L2
©2018 CONAIR CONSUMER PRODUCTS ULC

For more information on any Conair product
call: 1-855-926-6247

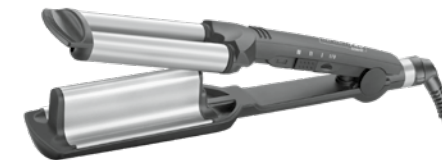
Visit our Web site:
www.conaircanada.ca

Consumer Call Centre E-mail:
Consumer_Canada@Conair.com

18CN033827

INFINITI**PRO**
BY CONAIR

ULTRA DEEP WAVE STYLER



Have a Question?

*Please do not return this product
to the retailer.*

Call Us First!

**Our customer service and product experts
are ready to answer ALL your questions.**

**Please call our TOLL-FREE
customer service number at:**

1-855-926-6247

**or visit us online at
www.conaircanada.ca**

For your safety and continued enjoyment
of this product, always read the instruction
book carefully before using.

Instruction & Styling Guide
Model **CD2447C**

IB-15976